



St Petersburg  
University

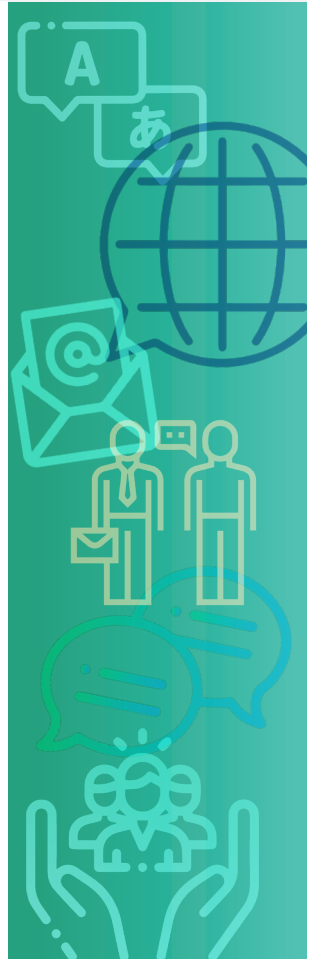
## LANGUAGE AND COMMUNICATION (IN GERMAN)

Level of education:	<b>Master programme</b>
Type of instruction:	<b>Full-time</b>
Duration:	<b>2 years</b>
Language of instruction:	<b>German</b>



### BENEFITS OF THE PROGRAMME

- “Languages and Communication” is a double-degree programme implemented in close partnership with the University of Greifswald.
- The programme offers an opportunity to study at the University of Greifswald as part of the double-degree initiative and receive a scholarship from the funds of an international grant project. Scholarships are awarded competitively.
- Unique teaching staff with expertise in priority areas of modern linguistics, including visiting professors from German partner universities and native German speakers from DAAD.
- The programme offers international mobility and academic recognition of the high professional competence of graduates in Germany and other German-speaking countries.
- Close partnership with the leading educational centres of Germany — the universities of Berlin, Hamburg, Heidelberg, Jena, Kiel, Leipzig, Munich, Trier, — as well as an opportunity to participate in international academic mobility programmes within the agreements of St Petersburg University and in the competition of DAAD scholarship programmes.



- Strong links with employers provide access to the best professional practices and industry leaders as consultants for the master's thesis. Our partners are leading language, cultural and educational centres of Germany, joint Russian-German enterprises, and translation departments of Russian companies.
- Modern technologies and methods of teaching that embrace the advancements in Russian and German university training.

## KEY SKILLS

- Ability to create, edit, summarize and systematize all types of linguistic, advertising, mass media and journalistic texts, business documentation, analytical reviews, etc.
- Building predictive scenarios and development models for communicative and sociocultural situations
- Expert evaluation of the impact of speech influence communicative strategies on public opinion
- Oral and written simultaneous translation of German texts
- Organization and management of research and development work.

## CAREER OPPORTUNITIES

Graduates are well-placed to embark on a career as university lecturers, school teachers, philologists in research centres, highly-qualified specialists in the centres of German culture and German language training or as translators.

## PROGRAMME OVERVIEW:

[Read more >](#)

## CONTACT US

### International Admissions Office

Location: 13B Universitetskaya Emb., St Petersburg, 199034, Russia

Working hours: Monday – Friday, from 10 AM to 6 PM

Phone: 007 812 3636633

[admission@spbu.ru](mailto:admission@spbu.ru)

