



St Petersburg
University

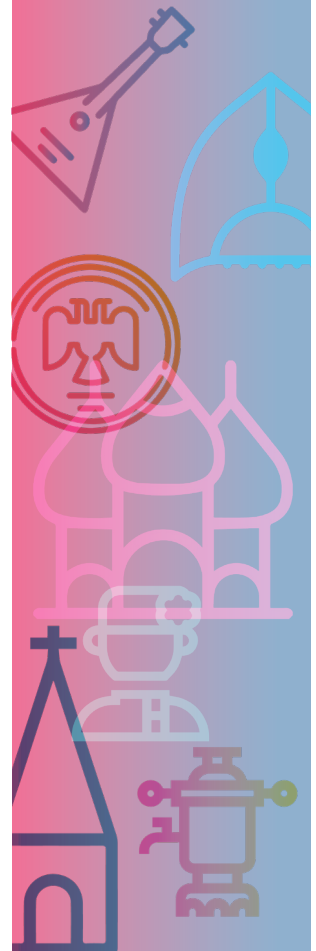
RUSSIAN CULTURE (IN ENGLISH)

| | |
|--------------------------|-------------------------|
| Level of education: | Master programme |
| Type of instruction: | Full-time |
| Duration: | 2 years |
| Language of instruction: | English |



BENEFITS OF THE PROGRAMME

- The programme provides an in-depth knowledge of Russian culture. It targets international students with a basic understanding of Russian history, philosophy, culture and art.
- The programme is unique in its combination of general subjects and those which provide an in-depth study of Russian cultural dimension. Our special focus is on the formation and development of Russian identity, the specifics of Russian mentality, and development of research methods for Russian cultural studies.
- Study plan incorporates advanced courses in the history of culture of various peoples of Russia in the context of world history. Acquired competences will help students form an objective view of the place of Russia in the global cultural and historical process and give an unbiased assessment of its role in the formation of civilizational and geopolitical trends in the contemporary world.
- The programme meets professional standards and employer expectations of graduates' professional competences, skills, and functions.



KEY SKILLS

- Theoretical and practical knowledge and skills graduates obtain enable them to perform analytical work and carry out academic research in contemporary Russian culture.
- Organisation of cross-cultural collaboration between Russian and international institutions.

CAREER OPPORTUNITIES

Graduates have fundamental knowledge in cultural studies and can apply this knowledge to study modern Russian culture. They are well-placed to secure a career in leading international academic institutions and universities, government bodies, advertising and travel agencies, international political and economic organisations, research and analytical centers, media agencies and publishers, archives, libraries, museums and educational institutions.

Key positions

- Records Manager
- Journalist
- Opinion journalist
- Editor (mass media)
- Guide
- Educator
- Expert analyst
- Archivist
- Museum worker
- Manager

PROGRAMME OVERVIEW:

[Read more >](#)

CONTACT US

International Admissions Office

Location: 13B Universitetskaya Emb., St Petersburg, 199034, Russia

Working hours: Monday – Friday, from 10 AM to 6 PM

Phone: 007 812 3636633

admission@spbu.ru

